

TargetModeler

Build Smarter AI Models, Faster.

Train AI faster and with greater confidence. TargetModeler generates ultra-realistic synthetic imagery to deliver precision datasets in minutes, not months. It reduces costly real-world collection, accelerates model development, and ensures trusted, mission-ready AI.

Break the Data Bottleneck

Conventional data pipelines stall under long collection cycles, high costs, and operational risks. TargetModeler breaks through with fast, flexible, mission-specific synthetic data, delivered on demand to meet mission requirements. Optimized for speed and scale, it empowers AI teams to train smarter, deploy faster, and stay decisively ahead.

- **Procedural realism:** EO/IR models, atmospheric, motion/occlusion, domain randomization.
- **Balanced & labeled:** Control class mix and hard cases; auto-labels (bbox/seg/track) stay consistent.
- **Domain-gap aware:** Export deltas, calibration checks, model cards, and scenario metadata.



- > PRECISION-LEVEL ANNOTATION
- > COMPLETE EDGE - CASE COVERAGE
- > INSTANT DEPLOYMENT OPTIONS
- > CROSS-PLATFORM COMPATIBILITY

Mission Applications



ACCELERATED AI/ML TRAINING WITH MISSION-READY DATASETS



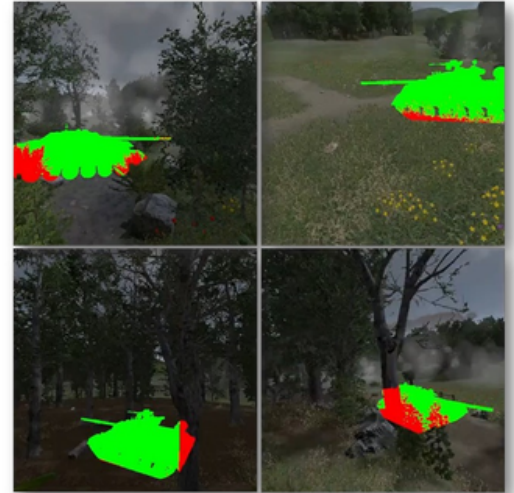
FAST, COST-EFFECTIVE ALTERNATIVE TO REAL-WORLD DATA COLLECTION



RAPID ADAPTATION TO EVOLVING THREATS AND ENVIRONMENTS



SUPERIOR MODEL PERFORMANCE VIA BALANCED, PRECISION DATASETS



FEATURE

BENEFIT

Precision Image Generation

Generates ultra-realistic, fully labeled imagery in minutes - not months - accelerating the path from concept to deployment.

Edge-Case Coverage

Closes the gaps real world data misses, giving your models the resilience to perform in unpredictable conditions.

Scenario Customization

Creates datasets tailored to mission-specific needs, ensuring your AI is trained for the exact challenges it will face.

Balanced Data Creation

Reduces bias and strengthen accuracy, building AI you can trust to deliver consistent, reliable results.

Workflow Integration

Plugs seamlessly into AI/ML pipelines, accelerating adoption without disrupting current processes

Bad data kills the best AI. Arm your models with synthetic data that's scalable, accurate, and mission-ready.

[LEARN MORE AT SENSOROPS.IO](https://sensorops.io)

Contact: solutions@sensorops.io

The appearance of U.S. Department of War (DOW) visual information does not imply or constitute DOW endorsement.

